

Associations between dopamine D2 receptor availability and BMI depend on age

Linh C. Dang^{a,*}, Gregory R. Samanez-Larkin^b, Jaime J. Castrellon^a, Scott F. Perkins^a, Ronald L. Cowan^{c,d}, David H. Zald^{a,c}

^a Department of Psychology, Vanderbilt University, 219 Wilson Hall, 111 21st Avenue South, Nashville, TN 37203, USA

^b Department of Psychology, Yale University, 2 Hillhouse Avenue, New Haven, CT 06520, USA

^c Department of Psychiatry, Vanderbilt University School of Medicine, 1601 23rd Ave South, Nashville, TN 37212, USA

^d Department of Radiology and Radiological Sciences, Vanderbilt University Medical Center, 1211 Medical Center Drive, Nashville, TN 37232, USA

ARTICLE INFO

Article history:

Received 21 March 2016

Revised 4 May 2016

Accepted 17 May 2016

Available online 18 May 2016

Keywords:

BMI

Obesity

Dopamine D2 receptor

Striatum

Midbrain

Aging

ABSTRACT

Objective: The dopamine D2/3 receptor subtypes (DRD2/3) are the most widely studied neurotransmitter biomarker in research on obesity, but results to date have been inconsistent, have typically involved small samples, and have rarely accounted for subjects' ages despite the large impact of age on DRD2/3 levels. We aimed to clarify the relation between DRD2/3 availability and BMI by examining this association in a large sample of subjects with BMI spanning the continuum from underweight to extremely obese.

Subjects: 130 healthy subjects between 18 and 81 years old underwent PET with [¹⁸F]fallypride, a high affinity DRD2/3 ligand.

Results: As expected, DRD2/3 availability declined with age. Critically, age significantly interacted with DRD2/3 availability in predicting BMI in the midbrain and striatal regions (caudate, putamen, and ventral striatum). Among subjects under 30 years old, BMI was not associated with DRD2/3 availability. By contrast, among subjects over 30 years old, BMI was positively associated with DRD2/3 availability in the midbrain, putamen, and ventral striatum.

Conclusion: The present results are incompatible with the prominent dopaminergic hypofunction hypothesis that proposes that a reduction in DRD2/3 availability is associated with increased BMI, and highlights the importance of age in assessing correlates of DRD2/3 function.

© 2016 Elsevier Inc. All rights reserved.

Introduction

Obesity and its complications are the leading causes of preventable death in the U.S. (Jia and Lubetkin, 2010). With over one-third of adults and nearly one-fifth of children meeting criteria for obesity, the need to understand the causes and consequences of obesity has never been greater (Ogden et al., 2014). Research exploring the brain's contributions to obesity have suggested the possible importance of dopamine functioning, which has been associated with body mass index (BMI), food intake, anticipatory response to reward, and responses to food restriction and other weight loss measures (Wang et al., 2001; South and Huang, 2008; Steele et al., 2010; Johnson and Kenny, 2010; Schott et al., 2008). Within the dopamine system, the dopamine D2/3 receptor subtypes (DRD2/3) have been the most widely studied biomarker in relation to obesity. The Taq1A minor (A1) allele of the DRD2/3 gene is associated with lower DRD2/3 density and has been found to exist in higher frequencies in obese subjects (Noble et al., 1994; Blum et al.,

1996; Spitz et al., 2000; Barnard et al., 2009). A landmark study in 2001 reported that striatal DRD2/3 availability was reduced in extremely obese subjects relative to control subjects and that striatal DRD2/3 availability correlated negatively with BMI in obese subjects (Wang et al., 2001). These findings gave rise to the prominent dopaminergic hypofunction hypothesis of obesity wherein it is speculated that reduced DRD2/3 availability plays a central role in a reduced response to the hedonic value of food that leads to compensatory overconsumption (Wang et al., 2001; Ziauddeen et al., 2012).

Since the initial proposal of the dopaminergic hypofunction account of obesity, several findings suggest that the relation between DRD2/3 and obesity might not reflect a simple reduction in DRD2/3 availability. A few studies with large sample sizes have reported no association between Taq1A and markers of obesity such as BMI (Fang et al., 2005; Nisoli et al., 2007; Jenkinson et al., 2000). As a genetic marker, Taq1A polymorphism offers only an indirect assessment of DRD2/3 expression and explains only part of the variance of DRD2/3 availability. In vivo assessment with PET provides a more direct index of DRD2/3 availability, but to date reports of associations between BMI and DRD2/3 availability measured with PET have also been inconsistent (Wang et al., 2001; Steele et al., 2010; Cosgrove et al., 2015; Karlsson et al., 2015; Guo

* Corresponding author at: Department of Psychology, Vanderbilt University, 219 Wilson Hall, 111 21st Avenue South, Nashville, TN 37203, USA.
E-mail address: linh.dang@vanderbilt.edu (L.C. Dang).

et al., 2014; Dunn et al., 2012; de Weijer et al., 2011; Frank et al., 2005). Although a few PET studies supported the initial finding that lean subjects had greater DRD2/3 availability than higher BMI subjects (Steele et al., 2010; Guo et al., 2014; de Weijer et al., 2011; Frank et al., 2005; Volkow et al., 2008; Haltia et al., 2007), several studies observed no relation (Steele et al., 2010; Karlsson et al., 2015; Eisenstein et al., 2015; Eisenstein et al., 2013; Caravaggio et al., 2015) or a correlation in the opposite direction (Cosgrove et al., 2015; Guo et al., 2014; Dunn et al., 2012; Caravaggio et al., 2015; Yasuno et al., 2001) (Table 1). Several factors may have contributed to these inconsistencies in the current literature. Most of the studies observing lower binding in obesity compared extremely obese subjects (BMI > 40) with normal weight subjects, and these findings may not generalize to other BMI ranges, especially in light of evidence that extreme obesity may reflect a state of aberrance distinct from other BMI categories (Mariman et al., 2015). Additionally, the sample sizes of most PET studies were small, with most having less

than two dozen subjects. Because of their wide confidence intervals in estimating correlations (Yarkoni, 2009), these small sample sizes have likely limited the potential of past PET studies to provide clarity on this association.

The present study aimed to clarify the relation between DRD2/3 availability and BMI by examining this often-cited association in a large sample of subjects. To ensure adequate statistical power, we assessed 130 subjects, which is more than three times the sample size of the previous largest PET study examining this question. Instead of contrasting an extremely obese group with a normal weight group, we included subjects spanning the range from mildly underweight to extremely obese in order to examine how DRD2/3 availability relates to the whole BMI spectrum. Lastly, in contrast to the majority of previous PET studies that utilized the tracer [11C]raclopride, here we used [18F]fallypride, which has higher affinity for DRD2/3 than [11C]raclopride and yields higher target-to-background signal for DRD2/3 availability (Slifstein et al., 2010).

Table 1

Previous PET studies reporting associations between BMI and DRD2/3 availability.

Authors	Age (mean \pm SD years)	BMI (mean \pm SD)	Ligand	Findings	Age effects?
<i>Positive BMI-BPnd associations</i>					
Caravaggio et al., 2015	26 healthy normal: 30 \pm 7, range 20–45	24 \pm 3	PET-[11C]PHNO	Ventral striatal BPnd positively related to BMI.	No effect of age on BMI or BPnd.
Cosgrove et al., 2015	12 healthy normal: 28 \pm 6, range 20–37	28 \pm 5	PET-[11C]PHNO	Caudate BPnd positively related to BMI.	No effect of age on BMI or BPnd.
Dunn et al., 2012	14 obese: 40 \pm 8	40 \pm 5	PET-[18F]fallypride	Caudate BPnd positively related to BMI.	na
Guo et al., 2014	8 control: 40 \pm 9 20 obese: 35 \pm 2, range 18–45	23 \pm 2 36 \pm 1	PET-[18F]fallypride	Dorsal/lateral striatal BPnd positively related to BMI.	No effect of age on BMI or BPnd. Age used as nuisance covariate.
Yasuno et al., 2001	23 control: 28 \pm 1, range 18–45 16 healthy normal: 26 \pm 5, range 21–35	22 \pm 1 Range 20–26	PET-[11C]FLB 457	Amygdala BPnd positively related to BMI.	na
<i>Negative BMI-BPnd associations</i>					
de Weijer et al., 2011	15 obese: 38 \pm 7, range 26–49	47 \pm 7	SPECT-[123I]IBZM	Striatal BPnd lower in obese than control.	No effect of age on BPnd. Age used as nuisance covariate.
	15 control: 28 \pm 10, range 20–60	22 \pm 2			
Frank et al., 2005	10 recovered anorexics: 24 \pm 5	22 \pm 3	PET-[11C]raclopride	Antero-ventral striatal BPnd higher in recovered anorexics than control.	No effect of age on BPnd.
Guo et al., 2014	12 control: 27 \pm 6 20 obese: 35 \pm 2, range 18–45	23 \pm 2 36 \pm 1	PET-[18F]fallypride	Ventromedial striatal BPnd negatively associated with BMI.	No effect of age on BMI or BPnd. Age used as nuisance covariate.
Haltia et al., 2007	23 control: 28 \pm 1, range 18–45 12 obese: 25 \pm 2.5	22 \pm 1 33 \pm 5	PET-[11C]raclopride	Striatal and thalamus BPnd lower in obese than control.	na
Steele et al., 2010	12 control: 26 \pm 4.5 5 gastric bypass patients: 20–38 (mean 32)	22 \pm 1 40–53 (mean 45)	PET-[11C]raclopride	BPnd increased after gastric bypass surgery.	na
Volkow et al. 2008 ^a	5 control: mean 22 10 obese: 36 \pm 10, range 20–55	Mean 21 51 \pm 5	PET-[11C]raclopride	Striatal BPnd lower in obese than control.	na
Wang et al., 2001	12 control: 33 \pm 8, range 20–55 10 obese: 39 \pm 7, range 26–54	25 \pm 3 51 \pm 5	PET-[11C]raclopride	Striatal BPnd lower in obese than control. BMI correlated negatively with BPnd in obese.	Age negatively correlated with BPnd in control. Age used as nuisance variable.
	10 control: 38 \pm 6, range 25–45	25 \pm 3			
<i>No BMI-BPnd associations</i>					
Caravaggio et al., 2015	35 healthy normal: 31 \pm 9, range 20–47	23 \pm 3	PET-[11C]raclopride	No correlation between ventral striatal BPnd and BMI.	No effect of age on BMI or BPnd.
Eisenstein et al., 2013	15 obese: 33 \pm 6, range 25–41	40 \pm 5	PET-[11C]NMB	No striatal BPnd diff. between obese and control. Striatal BPnd not correlated with BMI.	Putamen BPnd negatively correlated with age.
Karlsson et al., 2015	15 control: 30 \pm 6, range 22–40 13 obese: 39 \pm 11	23 \pm 2 42 \pm 4	PET-[11C]raclopride	No BPnd diff. between obese and control in any brain region.	na
Steele et al., 2010	14 control: 45 \pm 13 5 gastric bypass patients: 20–38 (mean 32) 5 control: mean 22	23 \pm 3 40–53 (mean 45) Mean 21	PET-[11C]raclopride	No striatal BPnd diff. between patients and control.	na

^a Reanalysis of data from Wang et al., 2001.

Furthermore, although the relation between DRD2/3 availability and BMI has received considerable attention in recent years, few studies have examined how this relation may change with age, particularly in humans. The dopamine system undergoes significant changes during aging, and some associations between dopamine and reward functions differ at different life stages (Backman et al., 2006; Dreher et al., 2008). Given that both BMI and DRD2/3 availability change across the lifespan, age represents a major potential confound in this literature. As obesity occurs in all stages of life, knowledge of how age influences the link between DRD2/3 availability and BMI may impact the development of effective prevention or treatment for obesity. Indeed, if the dopamine hypofunction hypothesis is correct, one might expect the negative relation between BMI and DRD2/3 receptors to increase with age, given a greater time span for the influence of receptors on BMI and the natural decline in DRD2/3 receptors that occurs with aging. We therefore examined the interaction of age on DRD2/3 availability and BMI to assess how this association changes across the lifespan.

Methods

Subjects

130 healthy subjects (age: 35.6 ± 18.2 years, 72 females, BMI: 25.5 ± 4.8) participated in this study. Among the 4 major BMI categories, 3 subjects were underweight (BMI < 18.5), 63 were in the normal range (BMI = 18.5–24.9), 46 were overweight (BMI = 25–29.9), and 18 were obese (BMI > 30; 3 of 18 reached criteria for extreme obesity with BMI > 40). Subjects were part of three separate studies examining different questions in our lab. Two studies involved subjects between 18 and 30 years old. The third study included subjects from 18 to 81 years old. Together there were 73 subjects under 30 years old and 57 subjects over 30 years old. Subjects were excluded if they reported any history of psychiatric illness in a screening interview (a Structured Clinical Interview for DSM-IV Diagnosis (First et al., 1997) was also available for all subjects and confirmed no history of major Axis I disorders). Subjects were also excluded if they had any history of head trauma, any significant medical condition, or any condition that would interfere with MRI (e.g. claustrophobia or metal implants). Subjects with major medical disorders including diabetes and/or abnormalities on a comprehensive metabolic panel or complete blood count were excluded. Subjects were also excluded if they reported a history of substance abuse, current tobacco use, alcohol consumption greater than 8 oz of whiskey or equivalent per week, use of psychostimulants (excluding caffeine) in the past 6 months, or any psychotropic medication in the last 6 months other than occasional use of benzodiazepines for sleep. Any illicit drug use in the last 2 months was grounds for exclusion, even in subjects who did not otherwise meet criteria for substance abuse. Urine drug tests were administered, and subjects testing positive for the presence of amphetamines, cocaine, marijuana, PCP, opiates, benzodiazepines, or barbiturates were excluded. Written informed consent was obtained from all subjects. This study was approved by the Institutional Review Board at Vanderbilt University and performed in accordance with the ethical standards of the 1964 Declaration of Helsinki and its later amendments.

Physical exam

Weight and height were measured by a clinician during each subject's physical exam, which was conducted to ensure that subjects met eligibility for MRI and PET scanning.

MRI data acquisition

Structural MRI scans were performed on two identically configured 3 Tesla Philips Achieva scanners located at the Vanderbilt University Institute for Imaging Science (VUIIS). T1-weighted high-resolution 3D

anatomical scans ($1 \times 1 \times 1$ mm resolution) were obtained for each participant to aid coregistration and normalization of PET images.

PET data acquisition

PET imaging was performed on a GE Discovery STE scanner located at Vanderbilt University Medical Center. The scanner has axial slices of 3.25 mm and in-plane pixel dimensions of 2.3×2.3 mm (with estimated FWHM of 4.5–5.5 mm near the center of the field of view). [18F]fallypride ((S)-N-[(1-allyl-2-pyrrolidinyl)methyl]-5-(3[18F]fluoropropyl)-2,3-dimethoxybenzamide) was produced in the radiochemistry laboratory attached to the PET unit, following synthesis and quality control procedures described in US Food and Drug Administration IND 47,245. [18F]fallypride is a substituted benzamide with very high affinity to D2/D3 receptors (Mukherjee et al., 1995).

3D emission acquisition scans were performed following a 5.0 mCi slow bolus injection of [18F]fallypride (specific activity greater than 3000 Ci/mmol). CT scans were collected for attenuation correction prior to each of the three emission scans, which together lasted approximately 3.5 h, with two 15-minute breaks for subject comfort. PET images were reconstructed with decay correction, attenuation correction, scatter correction, and calibration.

[18F]fallypride binding potential (BP_{ND}) image calculation

Voxelwise D2/D3 binding potential images were calculated using the simplified reference tissue model, which has been shown to provide stable estimates of [18F]fallypride BP_{ND} (Siessmeier et al., 2005). The cerebellum was the reference region because of its relative lack of D2/D3 receptors (Camps et al., 1989). The cerebellar reference region was obtained from an atlas provided by the ANSIR laboratory at Wake Forest University. Limitations in PET spatial resolution introduce blurring and cause signal to spill onto neighboring regions. Because the cerebellum is located posterior and adjacent to the midbrain, the location of dopamine neurons, only the posterior 3/4 of the cerebellum was included in the ROI to avoid contamination of [18F]fallypride signal from the midbrain. The cerebellum ROI also excluded voxels within 5 mm of the cortex to prevent contamination of cortical signals. The putamen ROI, drawn according to guidelines by Mawlawi et al. (Mawlawi et al., 2001) on the MNI brain, served as the receptor rich region in the analysis. The putamen, unlike other striatal ROIs, is not adjacent to any ventricle so the putamen ROI is free from ventricle-related partial volume effects. The cerebellum and putamen ROIs were registered to each subject's T1 image using FSL non-linear registration of the MNI template to individual subject T1. T1 images and their associated cerebellum and putamen ROIs were then coregistered to the mean image of all realigned frames in the PET scan using FSL-FLIRT (<http://www.fmrib.ox.ac.uk/fsl/>, version 6.00). Emission images from the 3 PET scans were merged temporally into a 4D file. To correct for motion during scanning and misalignment between the 3 PET scans, all PET frames were realigned using SPM8 to the frame acquired 10 min post injection (www.fil.ion.ucl.ac.uk/spm/). Model fitting and BP_{ND} calculation were performed using the PMOD Biomedical Imaging Quantification software (PMOD Technologies, Switzerland). Binding potential images represent the ratio of specifically bound ligand ([18F]fallypride in this study) to its free concentration.

[18F]fallypride BP_{ND} and BMI correlations

Relations between [18F]fallypride BP_{ND} and BMI were assessed with both voxelwise and ROI approaches. In all voxelwise and ROI analyses, gender was entered as a covariate of no-interest. Unless explicitly stated, age was also entered as a covariate of no interest. In voxelwise analyses, implemented in SPM8, BMI, age, and gender were regressed against [18F]fallypride BP_{ND} with familywise error correction and small volume correction with a striatal mask consisting of all three

striatal ROIs (caudate, putamen, and ventral striatum). We also ran voxelwise analyses without small volume correction to examine associations between BMI and [18F]fallypride BP_{ND} in extrastriatal brain areas. In ROI analyses, mean binding potential in the midbrain and 3 striatal ROIs were extracted to regress against BMI with age and gender as covariates of no interest. The midbrain and striatal ROIs were drawn in MNI standard space using previously described guidelines (Mawlawi et al., 2001; Dang et al., 2012a; Dang et al., 2012b) and registered to PET images using the same transformations for cerebellum registration to PET images (Fig. 1).

To examine effects of age on the relation between BP_{ND} and BMI, we reran the ROI regressions described above with an age by BP_{ND} interaction term in the models predicting BMI, with gender as a covariate of no interest. In these analyses age in years was entered as a continuous variable spanning the entire age range of the sample. To more fully characterize the nature of the observed interaction, we further divided subjects into those under and those over 30 years old. We note that the selection of age 30 as a dividing line for grouping subjects is arbitrary, but it was consistent with the preexisting cutoff point for the two studies of young adults included in these analyses. To verify that this grouping captured the interaction and to better understand its spatial representation within the striatum, we performed a follow-up voxelwise analysis contrasting regression slopes for BMI and BP_{ND} between the two age groups (<30 vs. >30). We then reran regressions between BP_{ND} in each ROI and BMI for each age group separately. We converted regression results into Pearson's r for ease of comparison across the two age groups. Finally, we performed voxelwise analyses regressing BMI on BP_{ND} separately for the under and over 30 year old groups to characterize the distribution of associations within the striatum.

Results

BP_{ND} and BMI across all ages

Voxelwise analyses (controlling for age and gender) did not identify any brain region showing a significant association between BP_{ND} and BMI at the whole brain level ($N = 130$). To confirm this result in DRD2/3 rich areas, we performed ROI analyses regressing BP_{ND} from the 3 a priori striatal ROIs and the midbrain ROI against BMI, again controlling for age and gender. We applied Bonferroni correction to counteract the issue of multiple comparisons with 4 ROIs and utilized a corrected significance threshold of $p < 0.0125$. In these more targeted analyses, BMI demonstrated a positive association with putamen BP_{ND} at the p-corrected threshold ($r = 0.27$, $p = 0.002$), with putamen

BP_{ND} explaining 7.5% of the variance in BMI. We note that the observed relation between BMI and putamen BP_{ND} was positive, which stands in sharp contrast to the predictions of the dopamine hypofunction hypothesis. No relation was observed between BMI and midbrain, ventral striatum, or caudate BP_{ND} across the whole age range (Table 2A).

BMI increased with age ($r = 0.27$, $p < 0.002$) while BP_{ND} substantially decreased with age ($r < -0.6$, $p < 10^{-10}$ for all ROIs). In light of evidence that age was related to both BP_{ND} and BMI, we sought to examine whether the relationship between BMI and BP_{ND} differs across adulthood. We therefore tested for an interaction of age (in years) and BP_{ND} on BMI across all 130 subjects. The interaction of age and BP_{ND} on BMI was significant in all 3 striatal ROIs at the p-corrected threshold ($r = 0.23$, $p = 0.009$ for putamen, $r = 0.22$, $p = 0.011$ for caudate, and $r = 0.23$, $p = 0.010$ for ventral striatum) and in the midbrain at the p-uncorrected threshold ($r = 0.20$, $p = 0.023$) (Table 2B). There was not an additional main effect of putamen BP_{ND} on BMI ($p = 0.425$) after including the significant age by BP_{ND} interaction in the model. In other words, rather than a consistent relation between putamen BP_{ND} and BMI across ages, the relationship (or lack thereof) differed based on the age of the subjects.

The above interaction analyses treated BMI as the dependent variable based on the causal direction implied by the dopaminergic hypofunction hypothesis in which D2/D3 receptor levels influence BMI. However, an alternative hypothesis could be that obesity leads to declines in D2/D3 receptor availability. We tested for this reverse causal direction in a regression model in which BMI and age interact to predict BP_{ND} . These analyses did not reveal significant interactions in any of the ROIs (all p-values > 0.5).

To characterize the interaction, we divided the sample into those above or below age 30. Voxelwise analysis contrasting regression slopes for BMI and BP_{ND} between the under and over 30-year-old groups confirmed that the relation between BP_{ND} and BMI differed between those under and those over 30 years old, particularly in the caudate and putamen (Fig. 2A).

We further characterized the interactions by examining the relation between BP_{ND} and BMI separately for subjects under 30 years old and for subjects over 30 years old. We note that these follow-up analyses were performed not to separately test for relations observed in the above analyses, but to clarify the nature and direction of the observed interaction.

We did not observe an interaction of gender and BP_{ND} on BMI (all p-values > 0.3), suggesting that although the Dunn et al. study included only females, relations between BP_{ND} and BMI do not vary by gender. Furthermore, we controlled for gender in all our analyses.

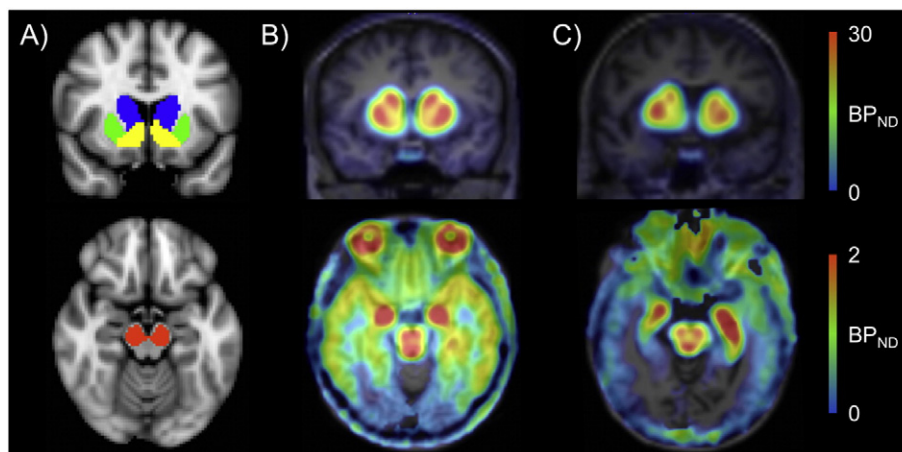


Fig. 1. ROIs and binding potential (BP_{ND}) images. A) Striatal (top) and midbrain (bottom) ROIs used for extracting BP_{ND} . B) One under 30-year-old subject's and C) one over 30-year-old subject's [18F]fallypride BP_{ND} images in native PET space. BP_{ND} , which declined with age, was highest in the striatum (top) and the midbrain (bottom). Note that the BP_{ND} maps use different scales to reflect the large differences in BP_{ND} values in striatal and extrastriatal brain regions.

Table 2
Correlations between BP_{ND} and BMI across all ages.

A) Model without BP _{ND} by age interaction		r	p-value
Midbrain		0.10	0.244
Putamen		0.27	0.002**
Caudate		0.16	0.063
Ventral striatum		0.13	0.134
B) Model with BP _{ND} by age interaction		BP _{ND} by age interaction	
		r	p-value
Midbrain		−0.12	0.179
Putamen		−0.07	0.425
Caudate		−0.10	0.284
Ventral striatum		−0.13	0.146

* p-uncorrected.

** p-corrected.

BP_{ND} and BMI among subjects under 30 years old

ROI analyses of subjects under age 30 (with gender and age entered as covariates of no interest) revealed no significant associations between BMI (range: 17.5–36.3, mean = 24.1) and BP_{ND} in the midbrain and all striatal ROIs (Table 3). Similarly, voxelwise analysis did not identify any brain region showing a significant (small-volume-corrected) association between BMI and BP_{ND} in this young adult age group.

BP_{ND} and BMI among subjects over 30 years old

Age did not correlate with BMI (range: 19.9–44.5, mean = 27.4) in this age group ($r = -0.07$, $p = 0.603$). By contrast, BP_{ND} decreased with age in all ROIs ($r = -0.46$, $p < 0.001$ for midbrain, $r = -0.57$, $p < 0.001$ for putamen, $r = -0.81$, $p < 0.001$ for caudate, $r = -0.41$, $p = 0.002$ for ventral striatum). ROI analyses (again controlling for age and gender) confirmed that BMI was significantly positively associated with BP_{ND} in the midbrain and all 3 striatal ROIs, although only at the p-uncorrected threshold for the caudate (Fig. 3 and Table 3). Three subjects in this age group were in the extremely obese category (BMI > 40) and may have magnified the correlations between BMI and BP_{ND}. To verify that these subjects did not unduly influence the results, we excluded these 3 subjects and reran the analyses. Without subjects having BMI over 40, the positive correlations between BMI and

Table 3
Correlations between BP_{ND} and BMI for under and over 30 year old groups.

	All BMI values		BMI < 40	
	r	p-value	r	p-value
<i>Under 30 years old (N = 73)</i>				
Midbrain	−0.10	0.393	na	na
Putamen	−0.09	0.446	na	na
Caudate	−0.15	0.224	na	na
Ventral striatum	0.00	0.978	na	na
<i>Over 30 years old (N = 57)</i>				
Midbrain	0.35	0.010**	0.26	0.058
Putamen	0.48	0.000**	0.35	0.011**
Caudate	0.33	0.015*	0.22	0.125
Ventral striatum	0.4	0.002**	0.31	0.028*

* p-uncorrected.

** p-corrected

BP_{ND} remained significant in the putamen at the p-corrected threshold and ventral striatum at the p-uncorrected threshold (Wang et al., 2001). Finally, to better understand the spatial distribution of the observed association, we performed voxelwise analysis examining the association between BMI and BP_{ND} controlling for age and gender. This analysis revealed that BP_{ND} was positively associated with BMI in the caudate and putamen (Fig. 2B) in an area that largely overlapped with the area identified in the voxelwise analysis testing for the interaction with age group and BMI (Fig. 2A).

Concerning a path of influence between age, BP_{ND}, and BMI, since age was not correlated with BMI, age did not have a direct effect on BMI and can only affect BMI via BP_{ND}, which did correlate with BMI. Therefore, among these variables, the path of influence is likely of age affecting BP_{ND} which affects BMI.

Cutoff point

To confirm that the differential relationship between BMI and BP_{ND} among the two age groups was not an artifact of the 30 year old cutoff point (which was the age cutoff in two of the studies from which data were drawn), we also analyzed the data using a median split (which corresponded to a 26 year old cutoff point) and a mean split (which corresponded to a 36 year old cutoff point). The pattern of results did not change. With a median split, there was again no significant relation

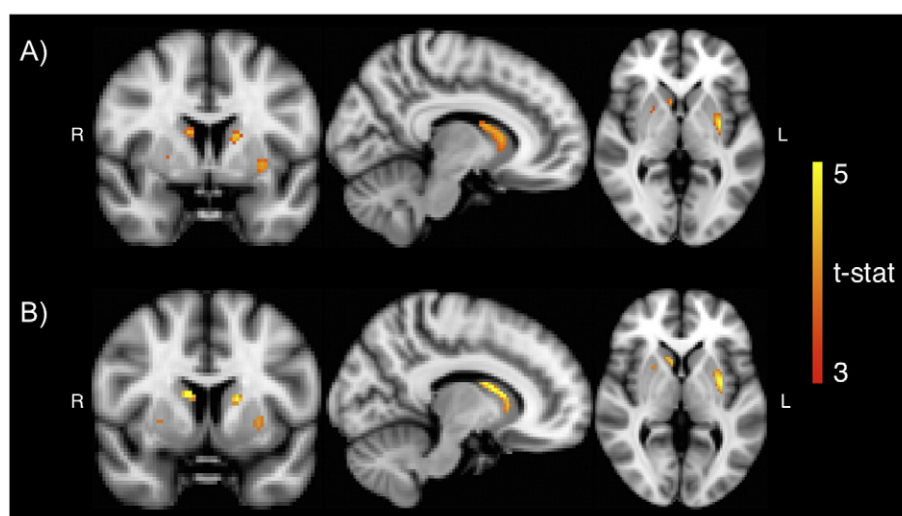


Fig. 2. Voxelwise results. A) Age group by BMI interaction analysis showed that the relation between BMI and BP_{ND} differed between those under and those over 30 years old in both the caudate and putamen (peak t-stat = 5.21, peak coordinate: $x = -32$, $y = -6$, $z = -2$). B) Among subjects over 30 years old, BMI was positively associated with BP_{ND} in bilateral caudate and bilateral putamen (peak t-stat = 5.39, peak coordinate: $x = 10$, $y = 6$, $z = 14$). Results were small-volume-corrected with a striatal mask.

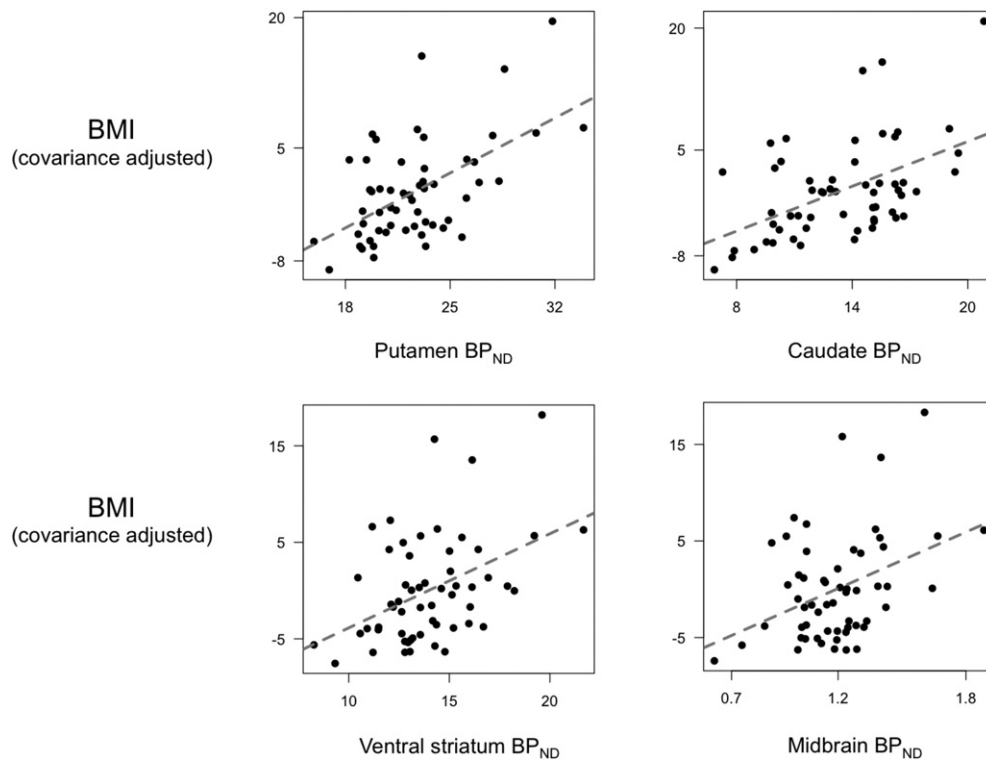


Fig. 3. BMI and BP_{ND} among subjects over 30 years old. ROI analyses confirmed that BMI correlated positively with BP_{ND} in the midbrain, putamen, and ventral striatum at the p-corrected threshold, and the caudate at the p-uncorrected threshold.

between BMI and BP_{ND} among subjects in the age group below the median split point ($n = 65$) (all p -values > 0.20). Among subjects in the age group above the median split point ($n = 65$), BMI again positively correlated with BP_{ND} significantly in all striatal ROIs ($r = 0.48$, $p < 0.0001$ for putamen, $r = 0.27$, $p = 0.030$ for caudate, $r = 0.33$, $p = 0.009$ for ventral striatum) and at trend level in the midbrain ($r = 0.24$, $p = 0.060$). With a 36 year old cutoff point, we also did not observe any significant relationship between BMI and BP_{ND} in the under 36-year old group ($n = 83$, all p -values > 0.10). Among subjects over 36 years old, putamen BP_{ND} remained positively associated with BMI ($r = 0.33$, p -value = 0.023) at the smaller sample size ($n = 47$). These additional analyses further confirmed the findings that relations between BMI and BP_{ND} differed across age groups.

Discussion

In the largest study to date to assess DRD2/3 availability *in vivo* in obesity and weight research, we observed relations between DRD2/3 availability and BMI that were dependent upon the age of the subjects studied. The interaction between age and DRD2/3 availability in predicting BMI was significant in the midbrain and all three striatal ROIs. Among subjects under 30 years old, BMI was not associated with DRD2/3 availability in the striatum or the midbrain. However, among subjects over 30 years old, BMI was positively associated with DRD2/3 availability in both the midbrain and the striatum.

The dopaminergic hypofunction hypothesis of obesity states that lower dopamine function leads to deficits in neural reward responses, resulting in compulsive eating and consequently obesity (Johnson and Kenny, 2010; Reinholz et al., 2008). Early reports of lower DRD2/3 density, indexed with the Taq1A gene, in obese subjects and negative associations between DRD2/3 availability and BMI led to the proposal that reduced DRD2/3 availability plays a causal role in altered reward processing in obesity (Wang et al., 2001; Noble et al., 1994; Volkow et al., 2008). The present results are incompatible with the dopaminergic hypofunction hypothesis, at least as typically formulated in regards to

DRD2/3. In young adults, when dopamine function is presumably optimal, individual differences in DRD2/3 availability showed no relation to BMI. Our observation of a positive association between DRD2/3 availability and BMI in adults over age 30 runs directly counter to the predictions of the dopaminergic receptor hypofunction model.

The causal factors leading to the positive association between BMI and DRD2/3 in the older age range but not the younger age range are not immediately clear. If the associations were driven by DRD2/3 receptor availability influencing food consumption, one would predict that this would already have an impact on BMI in young adults. One study using both PET tracers [11C]-(+)-PHNO and [11C]raclopride observed a relationship between BMI and [11C]-(+)-PHNO BP_{ND} but not [11C]raclopride BP_{ND}. Citing evidence that [11C]-(+)-PHNO is more sensitive to dopamine D2 receptor affinity state, the authors proposed that the relation between BMI and [11C]-(+)-PHNO BP_{ND} reflects increasing D2 receptor affinity with higher BMI. Normal aging is associated with numerous changes in dopamine function (Backman et al., 2006). It may be that beyond a certain age, changes in DRD2 affinity state cause the positive relation between BP_{ND} and BMI to be more prominent and observable with high affinity DRD2/3 ligands, such as [11C]-(+)-PHNO and [18F]fallypride (Cosgrove et al., 2015; Dunn et al., 2012; Caravaggio et al., 2015). Future studies specifically examining DRD2 affinity and BMI across the lifespan would provide insight into this possibility.

It is possible that methodological issues contribute to some of the inconsistencies that have emerged across studies. In contrast with previous PET studies that examined associations between DRD2/3 availability and BMI, we used the high affinity ligand [18F]fallypride to assess DRD2/3 availability. Previous PET studies that examined the role of DRD2/3 availability in obesity often used the lower affinity ligand [11C]raclopride (Wang et al., 2001; Steele et al., 2010; Frank et al., 2005). [11C]raclopride binding is more likely to be displaced by endogenous dopamine release (Slifstein et al., 2010; Slifstein et al., 2004), so [11C]raclopride binding potential reflects the combined effects of DRD2/3 availability and dopamine release to a

greater degree than [18F]fallypride (Cropley et al., 2008), possibly complicating the interpretation of correlations with [11C]raclopride binding potential especially since dopamine release has been associated with obesity in rodents (Anderzhanova et al., 2007; Yang and Meguid, 1995). It is noteworthy that the landmark PET study in 2001 that reported a negative relationship between BMI and DRD2/3 availability used [11C]raclopride (Wang et al., 2001), whereas PET studies using the higher affinity DRD2/3 ligand [18F]fallypride either reported positive associations between BMI and DRD2/3 availability in the striatum (Dunn et al., 2012) or both positive and negative associations in the striatum, suggesting regional specificity within the striatum. Future studies assessing dopamine release independent of DRD2/3 availability and DRD2 affinity will be necessary to determine whether previous reports of negative associations between [11C]raclopride binding potential and BMI stemmed from a link between BMI and dopamine release and/or DRD2 affinity.

Dopamine plays a critical role in reward processes, including responses to food cues and food intake. Obese individuals habituate to food reward at a slower rate than lean individuals, and high reward sensitivity contributes to overeating (Pepino and Mennella, 2012; Verbeke et al., 2012). If DRD2 availability has a causal influence on reward sensitivity, our findings of a positive association between DRD2/3 availability and BMI suggest that across much of adulthood, higher DRD2/3 availability may affect bodyweight by increasing or maintaining reward sensitivity for food.

Our study is different from some of the previous studies in that we did not focus on extremely obese subjects but instead included individuals along a broad BMI continuum (de Weijer et al., 2011). It could be that extreme obesity represents a condition that is distinct from other BMI categories and has a different relationship with DRD2/3 availability; several studies have reported that relations with DRD2/3 availability were different for obese subjects and non-obese subjects (Volkow et al., 2008; Haltia et al., 2007; Caravaggio et al., 2015). Indeed, it has been proposed that, rather than dopaminergic hypofunction influencing BMI, increased dopamine release associated with overeating downregulates dopamine receptor function, leading to the previously observed negative correlation between DRD2/3 availability and BMI in extremely obese subjects but not normal weight subjects (Wang et al., 2001; Verbeke et al., 2012). There are not enough subjects meeting criteria for extreme obesity in the present study to examine this possibility. However, in our study, positive associations between BMI and DRD2/3 availability among adults over age 30 were as high or higher with extremely obese subjects in the analyses than without. One would have expected the positive association to be reduced when extremely obese participants are included in the analysis if there was a negative association among extremely obese subjects or if there was an inflection point above which the relation between BMI and DRD2/3 reverses. It is notable in this regard that Dunn et al. (2012) found similar positive associations with BMI in an independent sample that included 14 obese women (mean BMI = 40). Taken together, these findings fail to provide evidence for a differential relationship between BMI and DRD2/3 in obese participants. Future clinical studies of the dopamine system exploring differences between extreme obesity and other BMI categories would help answer this question.

The present results suggest the need to play close attention to age when considering relations between dopamine, weight and obesity. While past studies often provide evidence that their obese and nonobese groups do not significantly differ in age, given the robustness of the association between age and DRD2/3 BP_{ND}, even relatively modest differences in age could substantially impact results. It is also of note that studies in this area (including the present one) generally pay little attention to the representativeness of samples. To qualify for the studies conducted in our lab, participants had to have no major medical problems (other than obesity), and had to pass a physical exam and blood work (complete blood count and comprehensive metabolic panel). With aging, fewer and

fewer potential participants are likely to meet such criteria, and therefore there is a potential bias when selecting healthy subjects in older age groups. This problem is not unique to this study, but may nevertheless influence findings from any study with strict exclusion criteria.

Our findings of a differential relationship between DRD2/3 availability and BMI in different age groups were observed with three different cutoff points for dividing subjects into a younger group and an older group. However, we have not attempted to determine a specific inflection point, whether it is at age 30 vs. age 26 or age 36. The age group categorization was primarily used here to characterize the nature of the observed statistical interaction using the continuous variables. It may prove valuable in future studies to determine if there is a specific age or age range after which the link between BMI and DRD2/3 availability changes. A final caveat is that, like the other PET studies in the field, the present study utilized a cross-sectional design and thus cannot speak to the causality of the current findings. The present study examined the dopaminergic hypofunction hypothesis, which postulates that lower dopamine function as reflected in DRD2 receptors leads to compensatory food intake and consequently obesity. However, it may be that obesity changes dopamine function. Longitudinal data are needed to address this question of causality.

Conclusions

The present findings in a large sample of adults demonstrate the importance of age in the relationship between DRD2/3 availability and BMI. Although there was no relation between DRD2/3 and BMI in young adults, a positive relationship emerged later in adulthood. These data provide no support for the idea that lower DRD2/3 plays a causal role in weight gain, and indicate the strong need to incorporate age into the analysis and interpretation of data in the field.

Conflict of interest

The authors declare no conflict of interest.

Acknowledgements

This study was funded by grants from the National Institute of Aging (R01AG043458 and R01AG044838 to D.H.Z.). L.C.D. was funded by F32DA036979. G.R.S.-L. was supported by R00AG042596

References

- Anderzhanova, E., Covasa, M., Hajnal, A., 2007. Altered basal and stimulated accumbens dopamine release in obese OLETF rats as a function of age and diabetic status. *Am. J. Physiol. Regul. Integr. Comp. Physiol.* 293 (2) (R603–R611).
- Backman, L., Nyberg, L., Lindenberger, U., Li, S.C., Farde, L., 2006. The correlative triad among aging, dopamine, and cognition: current status and future prospects. *Neurosci. Biobehav. Rev.* 30 (6), 791–807.
- Barnard, N.D., Noble, E.P., Ritchie, T., Cohen, J., Jenkins, D.J., Turner-McGrievy, G., et al., 2009. D2 dopamine receptor Taq1A polymorphism, body weight, and dietary intake in type 2 diabetes. *Nutrition* 25 (1), 58–65.
- Blum, K., Braverman, E.R., Wood, R.C., Gill, J., Li, C., Chen, T.J., et al., 1996. Increased prevalence of the Taq1A1 allele of the dopamine receptor gene (DRD2) in obesity with comorbid substance use disorder: a preliminary report. *Pharmacogenetics* 6 (4), 297–305.
- Camps, M., Cortes, R., Gueye, B., Probst, A., Palacios, J.M., 1989. Dopamine receptors in human brain: autoradiographic distribution of D2 sites. *Neuroscience* 28 (2), 275–290.
- Caravaggio, F., Raitsin, S., Gerretsen, P., Nakajima, S., Wilson, A., Graff-Guerrero, A., 2015. Ventral striatum binding of a dopamine D2/3 receptor agonist but not antagonist predicts normal body mass index. *Biol. Psychiatry* 77 (2), 196–202.
- Cosgrove, K.P., Veldhuizen, M.G., Sandiego, C.M., Morris, E.D., Small, D.M., 2015. Opposing relationships of BMI with BOLD and dopamine D2/3 receptor binding potential in the dorsal striatum. *Synapse* 69 (4), 195–202.
- Cropley, V.L., Innis, R.B., Nathan, P.J., Brown, A.K., Sangare, J.L., Lerner, A., et al., 2008. Small effect of dopamine release and no effect of dopamine depletion on [18F]fallypride binding in healthy humans. *Synapse* 62 (6), 399–408.
- Dang, L.C., O'Neil, J.P., Jagust, W.J., 2012a. Dopamine supports coupling of attention-related networks. *J. Neurosci.* 32 (28), 9582–9587.
- Dang, L.C., O'Neil, J.P., Jagust, W.J., 2012b. Genetic effects on behavior are mediated by neurotransmitters and large-scale neural networks. *NeuroImage* 66C, 203–214.

- de Weijer, B.A., van de Giessen, E., van Amelsvoort, T.A., Boot, E., Braak, B., Janssen, I.M., et al., 2011. Lower striatal dopamine D2/3 receptor availability in obese compared with non-obese subjects. *EJNMMI Res.* 1 (1), 37.
- Dreher, J.C., Meyer-Lindenberg, A., Kohn, P., Berman, K.F., 2008. Age-related changes in midbrain dopaminergic regulation of the human reward system. *Proc. Natl. Acad. Sci. U. S. A.* 105 (39), 15106–15111.
- Dunn, J.P., Kessler, R.M., Feurer, I.D., Volkow, N.D., Patterson, B.W., Ansari, M.S., et al., 2012. Relationship of dopamine type 2 receptor binding potential with fasting neuroendocrine hormones and insulin sensitivity in human obesity. *Diabetes Care* 35 (5), 1105–1111.
- Eisenstein, S.A., Antenor-Dorsey, J.A.V., Gredysa, D.M., Koller, J.M., Bihun, E.C., Ranck, S.A., et al., 2013. A comparison of D2 receptor specific binding in obese and normal-weight individuals using PET with (N-[C-11]methyl)benperidol. *Synapse* 67 (11), 748–756.
- Eisenstein, S.A., Gredysa, D.M., Antenor-Dorsey, J.A., Green, L., Arbelaez, A.M., Koller, J.M., et al., 2015. Insulin, central dopamine D2 receptors, and monetary reward discounting in obesity. *PLoS ONE* 10 (7), e0133621.
- Fang, Y.J., Thomas, G.N., Xu, Z.L., Fang, J.Q., Critchley, J.A., Tomlinson, B., 2005. An affected pedigree member analysis of linkage between the dopamine D2 receptor gene TaqI polymorphism and obesity and hypertension. *Int. J. Cardiol.* 102 (1), 111–116.
- First, M.B., Spitzer, R.L., Gibbon, M., Williams, J.B.W., 1997. Structured Clinical Interview for DSM-IV Axis I Disorders (SCID-I). American Psychiatric Publishing, Inc., Washington, D.C. (1/1/1997 88 p).
- Frank, G.K., Bailer, U.F., Henry, S.E., Drevets, W., Meltzer, C.C., Price, J.C., et al., 2005. Increased dopamine D2/D3 receptor binding after recovery from anorexia nervosa measured by positron emission tomography and [11C]raclopride. *Biol. Psychiatry* 58 (11), 908–912.
- Guo, J., Simmons, W.K., Herscovitch, P., Martin, A., Hall, K.D., 2014. Striatal dopamine D2-like receptor correlation patterns with human obesity and opportunistic eating behavior. *Mol. Psychiatry* 19 (10), 1078–1084.
- Haltia, L.T., Rinne, J.O., Merisaari, H., Maguire, R.P., Savontaus, E., Helin, S., et al., 2007. Effects of intravenous glucose on dopaminergic function in the human brain in vivo. *Synapse* 61 (9), 748–756.
- Jenkinson, C.P., Hanson, R., Cray, K., Wiedrich, C., Knowler, W.C., Bogardus, C., et al., 2000. Association of dopamine D2 receptor polymorphisms Ser311Cys and TaqIA with obesity or type 2 diabetes mellitus in Pima Indians. *Int. J. Obes. Relat. Metab. Disord.* 24 (10), 1233–1238.
- Jia, H., Lubetkin, E.I., 2010. Trends in quality-adjusted life-years lost contributed by smoking and obesity. *Am. J. Prev. Med.* 38 (2), 138–144.
- Johnson, P.M., Kenny, P.J., 2010. Dopamine D2 receptors in addiction-like reward dysfunction and compulsive eating in obese rats. *Nat. Neurosci.* 13 (5), 635–641.
- Karlsson, H.K., Tuominen, L., Tuuluri, J.J., Hirvonen, J., Parkkola, R., Helin, S., et al., 2015. Obesity is associated with decreased mu-opioid but unaltered dopamine D2 receptor availability in the brain. *J. Neurosci.* 35 (9), 3959–3965.
- Mariman, E.C.M., Bouwman, F.G., Aller, E.E.J.G., van Baak, M.A., Wang, P., 2015. Extreme obesity is associated with variation in genes related to the circadian rhythm of food intake and hypothalamic signaling. *Physiol. Genomics* 47 (6), 225–231.
- Mawlawi, O., Martinez, D., Slifstein, M., Broft, A., Chatterjee, R., Hwang, D.R., et al., 2001. Imaging human mesolimbic dopamine transmission with positron emission tomography: I. Accuracy and precision of D(2) receptor parameter measurements in ventral striatum. *J. Cereb. Blood Flow Metab.* 21 (9), 1034–1057.
- Mukherjee, J., Yang, Z.Y., Das, M.K., Brown, T., 1995. Fluorinated benzamide neuroleptics—III. Development of (S)-N-[(1-allyl-2-pyrrolidinyl)methyl]-5-(3-[18F]fluoropropyl)-2, 3-dimethoxybenzamide as an improved dopamine D-2 receptor tracer. *Nucl. Med. Biol.* 22 (3), 283–296.
- Nisoli, E., Brunani, A., Borgomainerio, E., Tonello, C., Dioni, L., Briscini, L., et al., 2007. D2 dopamine receptor (DRD2) gene Taq1A polymorphism and the eating-related psychological traits in eating disorders (anorexia nervosa and bulimia) and obesity. *Eat. Weight Disord.* 12 (2), 91–96.
- Noble, E.P., Noble, R.E., Ritchie, T., Syndulko, K., Bohlman, M.C., Noble, L.A., et al., 1994. D2 dopamine receptor gene and obesity. *Int. J. Eat. Disord.* 15 (3), 205–217.
- Ogden, C.L., Carroll, M.D., Kit, B.K., Flegal, K.M., 2014. Prevalence of childhood and adult obesity in the United States, 2011–2012. *J. Am. Med. Assoc.* 311 (8), 806–814.
- Pepino, M.Y., Mennella, J.A., 2012. Habituation to the pleasure elicited by sweetness in lean and obese women. *Appetite* 58 (3), 800–805.
- Reinholz, J., Skopp, O., Breitenstein, C., Bohr, I., Winterhoff, H., Knecht, S., 2008. Compensatory weight gain due to dopaminergic hypofunction: new evidence and own incidental observations. *Nutr. Metab.* 5.
- Schott, B.H., Minuzzi, L., Krebs, R.M., Elmenhorst, D., Lang, M., Winz, O.H., et al., 2008. Mesolimbic functional magnetic resonance imaging activations during reward anticipation correlate with reward-related ventral striatal dopamine release. *J. Neurosci.* 28 (52), 14311–14319.
- Siessmeier, T., Zhou, Y., Buchholz, H.G., Landvogt, C., Vernaleken, I., Piel, M., et al., 2005. Parametric mapping of binding in human brain of D2 receptor ligands of different affinities. *J. Nucl. Med.* 46 (6), 964–972.
- Slifstein, M., Hwang, D.R., Huang, Y., Guo, N., Sudo, Y., Narendran, R., et al., 2004. In vivo affinity of [18F]fallypride for striatal and extrastriatal dopamine D2 receptors in non-human primates. *Psychopharmacology* 175 (3), 274–286.
- Slifstein, M., Kegeles, L.S., Xu, X., Thompson, J.L., Urban, N., Castrillon, J., et al., 2010. Striatal and extrastriatal dopamine release measured with PET and [(18)F] fallypride. *Synapse* 64 (5), 350–362.
- South, T., Huang, X.F., 2008. High-fat diet exposure increases dopamine D2 receptor and decreases dopamine transporter receptor binding density in the nucleus accumbens and caudate putamen of mice. *Neurochem. Res.* 33 (3), 598–605.
- Spitz, M.R., Detry, M.A., Pillow, P., Hu, Y.H., Amos, C.I., Hong, W.K., et al., 2000. Variant alleles of the D2 dopamine receptor gene and obesity. *Nutr. Res.* 20 (3), 371–380.
- Steele, K.E., Prokopowicz, G.P., Schweitzer, M.A., Magunson, T.H., Lidor, A.O., Kuwabawa, H., et al., 2010. Alterations of central dopamine receptors before and after gastric bypass surgery. *Obes. Surg.* 20 (3), 369–374.
- Verbeken, S., Braet, C., Lammertyn, J., Goossens, L., Moens, E., 2012. How is reward sensitivity related to bodyweight in children? *Appetite* 58 (2), 478–483.
- Volkow, N.D., Wang, G.J., Telang, F., Fowler, J.S., Thanos, P.K., Logan, J., et al., 2008. Low dopamine striatal D2 receptors are associated with prefrontal metabolism in obese subjects: possible contributing factors. *NeuroImage* 42 (4), 1537–1543.
- Wang, G.J., Volkow, N.D., Logan, J., Pappas, N.R., Wong, C.T., Zhu, W., et al., 2001. Brain dopamine and obesity. *Lancet* 357 (9253), 354–357.
- Yang, Z.J., Meguid, M.M., 1995. LHA dopaminergic activity in obese and lean Zucker rats. *Neuroreport* 6 (8), 1191–1194.
- Yarkoni, T., 2009. Big correlations in little studies: inflated fMRI correlations reflect low statistical power—commentary on Vul et al. (2009). *Perspect. Psychol. Sci.* 4 (3), 294–298.
- Yasuno, F., Suhara, T., Sudo, Y., Yamamoto, M., Inoue, M., Okubo, Y., et al., 2001. Relation among dopamine D-2 receptor binding, obesity and personality in normal human subjects. *Neurosci. Lett.* 300 (1), 59–61.
- Ziauddeen, H., Farooqi, I.S., Fletcher, P.C., 2012. Obesity and the brain: how convincing is the addiction model? *Nat. Rev. Neurosci.* 13 (4), 279–286.